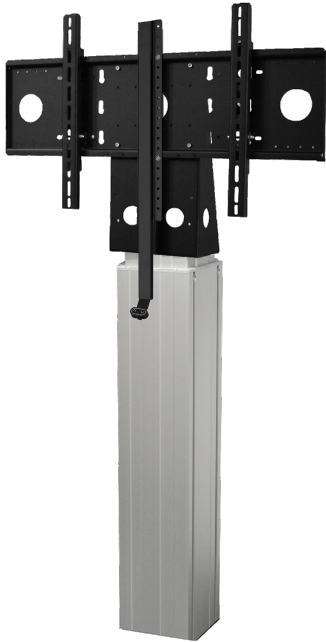


83502035

SPECIFICATION SHEET  
WWW.CONEN-SYSTEMS.COM

## DISPLAY STAND FOR WALL MOUNTING - "MOW 150

COLUMN: BLACK, INCL. WALL SPACERS



### PRODUCT

The motorized wall mount, MOW 150, is the ideal mount so that you can safely install very large and heavy displays. The mounting is suitable for both solid stone walls and lightweight walls.

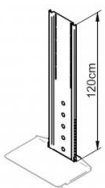
The standard version of our MOW 150 includes a mount VESA 100×100 - 800×600.

An additional height grid in the column attachment makes it possible to vary the height by 20 cm. In the column top there is an integrated shelf on the back to hold e.g. a mini-PC.

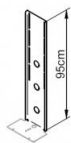
The wall mounting is done with 2 angles made of metal (installation depth approx. 7 cm). 4 floor leveling screws for leveling uneven floors are included.

The motorized lifting column is made of anodized aluminum and is also available with a black column. The VESA mount is powder coated in RAL 9005 deep black, fine structure.

### Accessories



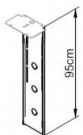
Mounting rail for shelf - 120 cm, for mounting on the



Mounting rail for shelf - 95 cm for mounting on



Telescopic mounting rail - 60 cm for the use of 2 horizontal



Telescopic mounting rail - 95 cm - HKS modular system



Shelf A - 26 x 17 cm - HKS modular system



Shelf B - 55 x 15 cm - HKS modular system

### FEATURES

- Display approx. 50 cm motorized movable
- Made in Germany
- For a display up to max. 98"
- Load capacity up to max. 130 kg
- Barrier-free
- Wall mounting



Display mount



Wall mounted



Single display



Max. load  
130 kg / 286.6 lbs



Max. Vesa  
800 x 600

Item number	83502035	
Vesa horizontal / Vesa vertical	100 mm - 800 mm / 100 mm - 600 mm	
Frame for all	98" max.	
Center to floor distance	1080 mm - 1580 mm	42.5" - 62.2"
Load capacity	130 kg	286.6 lbs
Width / Height / Depth	210 mm / 1080 mm - 1780 mm / 230 mm	8.3" / 42.5" - 70.1" / 9.1"
Weight	38 kg	83.8 lbs
Base color	RAL 9005 deep black	

Conen Systems GmbH  
 Conenstr. 4  
 54497 Morbach-Gonzerath  
 Germany

T +49 6533 75-100  
 F +49 6533 75-600  
 E [service@conen-systems.com](mailto:service@conen-systems.com)  
[www.conen-systems.com](http://www.conen-systems.com)

© Copyright by Conen Systems GmbH