

20123150GS

SPECIFICATION SHEET
WWW.CONEN-SYSTEMS.COM

SCREEN WITH MOTOR - "CONGRESS-S

W/H: 500X313 CM, WITH MOTOR



PRODUCT

The Congress-S is an extremely high-quality projection screen, which is ideal for use in the field of congresses and events. It is characterized by its special sizes up to 10 meters and its technical equipment.

Depending on the format of the projection screen, the Congress-S is manufactured up to W 600 x H 400 cm in a robust sheet steel housing in RAL 9016 Traffic White (15 x 15 or 20 x 20 cm), from a format larger than 600 cm width in a galvanized housing (30 x 30 or 40 x 40 cm). Other colors are optionally possible according to RAL Classic, please contact us!

The projection screen Congress-S is designed for ceiling mounting by mounting brackets on the outer sides of the housing. Up to a size of W 600 x H 400 cm (housing 15 x 15 or 20 x 20 cm) there is a revision possibility without dismantling the housing. From a size larger than 600 cm width (housing 30 x 30 or 40 x 40 cm) this revision possibility is omitted.

Important note on DIN 56950-4 - All projection screens over 5 meters are equipped with a safety catch and a testable safety limit switch as standard. The built-in switch meets the requirements demanded in stage technology. Thus, all necessary criteria for the tendering and testing of mechanical equipment in operating facilities are already fulfilled in our standard design.

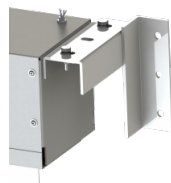
Accessories



Mounting set - suspended ceiling - for Congress-S



Congress-S pre-assembly frame - for 500 cm screen width



Wall bracket without spacing for Congress-S (housing 20 x 20)

Motor drive - left

Radio remote control - 1-channel with hand-held transmitter (Congress-S)



FEATURES

- formats up to 1.000 x 600 cm available
- for ceiling mounting
- wall bracket optionally available
- pre-assembly frame up to 600 x 400 cm optionally available
- Screen surface Polar GS - flame retardant, meets the requirements of DIN 4102 - B1
- Construction DIN 56950-4: 2015 Safety requirements and tests for prefabricated picture walls



Ceiling mounted



Wall mounted

Item number	20123150GS	
Image size	5000 mm - 3130 mm	196.9" - 123.2"
Weight	108 kg	238.1 lbs
Packages	Package dimensions WxHxD	Package weight
20123150GS	5500 x 250 x 250 mm / 216.5 x 9.8 x 9.8"	180 kg / 396.8 lbs

Dimensions



Conen Systems GmbH
Conenstr. 4
54497 Morbach-Gonzerath
Germany

T +49 6533 75-100
F +49 6533 75-600
E service@conen-systems.com
www.conen-systems.com

© Copyright by Conen Systems GmbH

07/16/2024
Page 2/2