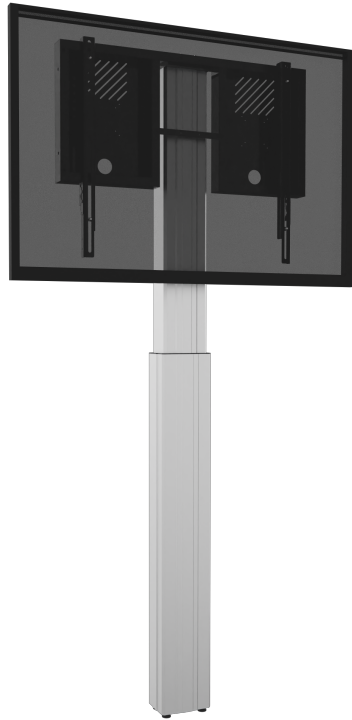


RLI12090WK

SPECIFICATION SHEET
WWW.CONEN-SYSTEMS.COM

HEIGHT ADJUSTABLE MONITOR WALL MOUNT, LITE SERIES

SILVER, WITH ANTI-COLLISION, CENTER TO FLOOR 930 - 1830 MM



PRODUCT

Motorized adjustable wall mount for 55"-86" (interactive) touch screen. The single-column, floor-to-wall design, guarantees maximum stability & safety.

The mount comes standard with a wired remote control, allowing the user to raise and lower the screen with a simple touch of the button. The high-speed actuator has an unsurpassed speed of 1.85"/47mm per second.

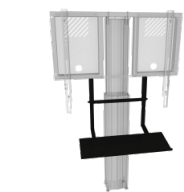
Conen cares about classroom safety. The motorized mount features an anti-collision sensor that detects objects that are in the way during operation. If an obstruction is detected, the system stops and reverses the operational direction.

The RLI12090WK monitor mount also offers an extended 900mm/35.5" of smooth motorized height adjustment giving everyone, even those in early grades or in a wheelchair, to participate.

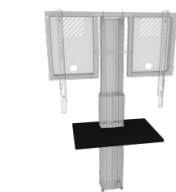
The integrated display mount allows for displays with maximum weight of 136kg/300 lbs. and a max. VESA 800x600 pattern. Two "pull & release" locking brackets ensure quick and easy mounting of the monitor.

The unit comes disassembled and ships in two, courier-shippable, cartons.

Accessories



Keyboard shelf for LITE series



Front shelf for LIGHT system



Laptop side shelf



Universal PC bracket



Floor plate for display mounts LITE serie (CCELW-AF + RLi...)



Soundbar bracket

FEATURES

- 90cm / 35.5" height adjustment
- Anti-collision feature
- Motor speed 1.85" / 47mm per second
- For displays up to 86"
- Max. display weight: 136kg / 300 lbs.
- VESA pattern max. 800x600. Bracket included
- 4 Levelling feet + 2 wall mounting brackets for maximum stability



Display mount



Wall mounted



Motorized height adjustable



Single display



5 years warranty



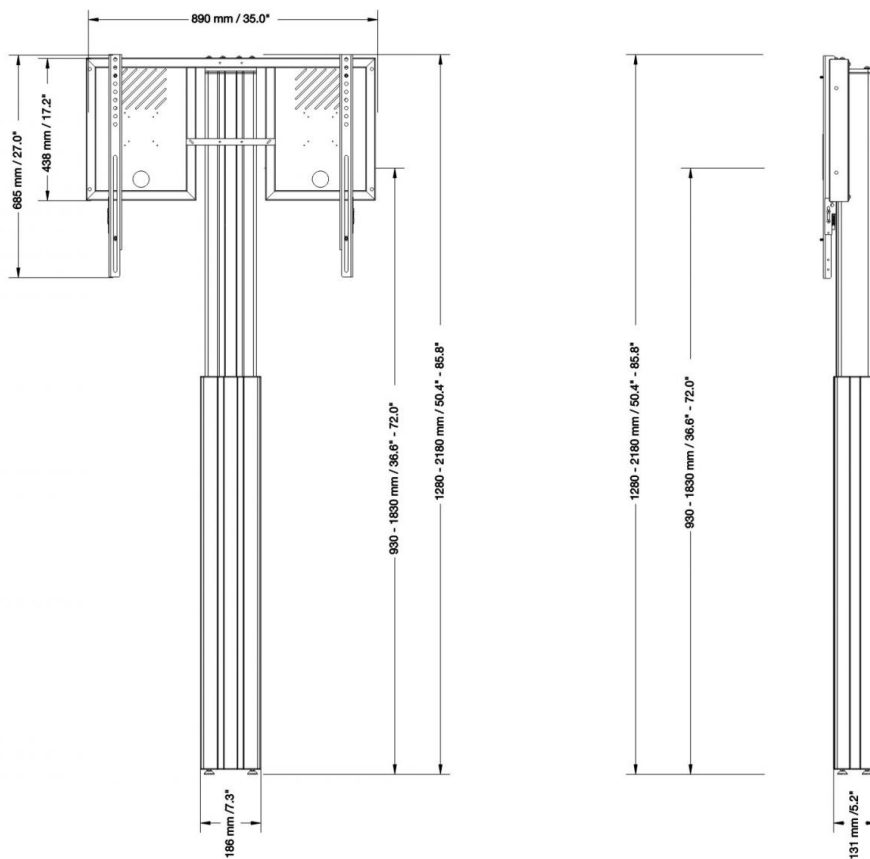
Max. load
136 kg / 299.8 lbs



Max. Vesa
800 x 600

| | | |
|---------------------------------|---|----------------------------|
| Item number | RLI12090WK | |
| Vesa horizontal / Vesa vertical | 300 mm - 800 mm / 200 mm - 600 mm | |
| Frame for all | 55" - 86" | |
| Center to floor distance | 930 mm - 1830 mm | 36.6" - 72" |
| Load capacity | 136 kg | 299.8 lbs |
| Width / Height / Depth | 890 mm / 1280 mm - 2180 mm / 166 mm | 35" / 50.4" - 85.8" / 6.5" |
| Warranty | 5 years limited warranty | |
| Frame color | RAL 9005 deep black | |
| Column color | Silver anodized | |
| Packages | Package dimensions WxHxD | Package weight |
| AFSCETARLI | 930 x 70 x 540 mm / 36.6 x 2.8 x 21.3" | 14 kg / 30.9 lbs |
| CCEL12090WK | 1390 x 195 x 245 mm / 54.7 x 7.7 x 9.6" | 27,6 kg / 60.8 lbs |
| Total weight | 41,6 kg / 91.7 lbs | |

Dimensions



Conen Systems GmbH
Conenstr. 4
54497 Morbach-Gonzerath
Germany

T +49 5251 50012-0
E sales@conen-systems.com

www.conen-systems.com

© Copyright by Conen Systems GmbH

03/05/2025
Page 2/2