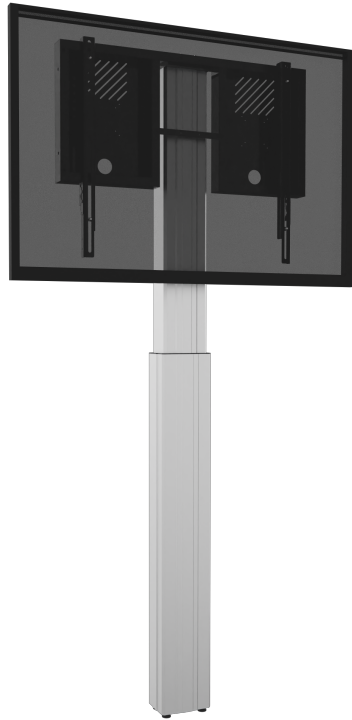


RLI12090WK

SPECIFICATION SHEET  
WWW.CONEN-SYSTEMS.COM

## HEIGHT ADJUSTABLE MONITOR WALL MOUNT, LITE SERIES

SILVER, WITH ANTI-COLLISION, CENTER TO FLOOR 930 - 1830 MM



### PRODUCT

Motorized adjustable wall mount for 55"-86" (interactive) touch screen. The single-column, floor-to-wall design, guarantees maximum stability & safety.

The mount comes standard with a wired remote control, allowing the user to raise and lower the screen with a simple touch of the button. The high-speed actuator has an unsurpassed speed of 1.85"/47mm per second.

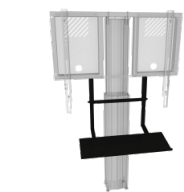
Conen cares about classroom safety. The motorized mount features an anti-collision sensor that detects objects that are in the way during operation. If an obstruction is detected, the system stops and reverses the operational direction.

The RLI12090WK monitor mount also offers an extended 900mm/35.5" of smooth motorized height adjustment giving everyone, even those in early grades or in a wheelchair, to participate.

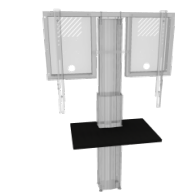
The integrated display mount allows for displays with maximum weight of 136kg/300 lbs. and a max. VESA 800x600 pattern. Two "pull & release" locking brackets ensure quick and easy mounting of the monitor.

The unit comes disassembled and ships in two, courier-shippable, cartons.

### Accessories



Keyboard shelf for LITE series



Front shelf for LIGHT system



Laptop side shelf



Universal PC bracket



Floor plate for display mounts  
LITE serie (CCELW-AF + RLi...)

### FEATURES

- 90cm / 35.5" height adjustment
- Anti-collision feature
- Motor speed 1.85" / 47mm per second
- For displays up to 86"
- Max. display weight: 136kg / 300 lbs.
- VESA pattern max. 800x600. Bracket included
- 4 Levelling feet + 2 wall mounting brackets for maximum stability



Display mount



Wall mounted



Motorized height adjustable



Single display



5 years warranty



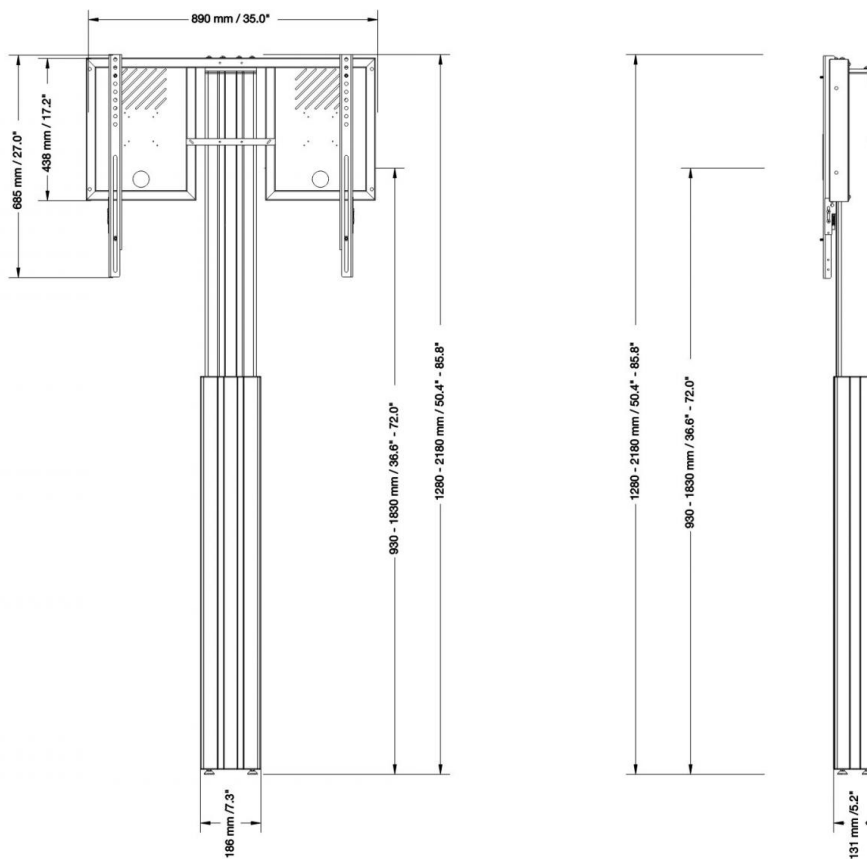
Max. load  
136 kg / 299.8 lbs



Max. Vesa  
800 x 600

Item number	RLI12090WK	
Vesa horizontal / Vesa vertical	300 mm - 800 mm / 200 mm - 600 mm	
Frame for all	55" - 86"	
Center to floor distance	930 mm - 1830 mm	36.6" - 72"
Load capacity	136 kg	299.8 lbs
Width / Height / Depth	890 mm / 1280 mm - 2180 mm / 166 mm	35" / 50.4" - 85.8" / 6.5"
Warranty	5 years limited warranty	
Frame color	RAL 9005 deep black	
Column color	Silver anodized	
Packages	Package dimensions WxHxD	Package weight
AFSCETARLI	895 x 65 x 485 mm / 35.2 x 2.6 x 19.1"	14 kg / 30.9 lbs
CCEL12090WK	1390 x 195 x 245 mm / 54.7 x 7.7 x 9.6"	27,6 kg / 60.8 lbs
Total weight	41,6 kg / 91.7 lbs	

## Dimensions



Conen Systems GmbH  
Conenstr. 4  
54497 Morbach-Gonzerath  
Germany

T +49 6533 75-100  
F +49 6533 75-600  
E [service@conen-systems.com](mailto:service@conen-systems.com)  
[www.conen-systems.com](http://www.conen-systems.com)

© Copyright by Conen Systems GmbH

08/13/2024  
Page 2/2