

20123150-S

SPECIFICATION SHEET
WWW.CONEN-SYSTEMS.COM

SCREEN WITH MOTOR - "CONGRESS S

W/H: 500X313 CM, WITH MOTOR



PRODUCT

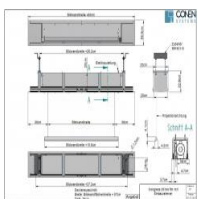
The Congress-S is an extremely high-quality projection screen, which is ideal for use in the field of congresses and events. It is characterized by its special sizes up to 10 meters and its technical equipment.

Depending on the format of the projection screen, the Congress-S is manufactured up to W 600 x H 400 cm in a robust sheet steel housing in RAL 9016 Traffic White (15 x 15 or 20 x 20 cm), from a format larger than 600 cm width in a galvanized housing (30 x 30 or 40 x 40 cm) Other colors are optionally possible according to RAL Classic, please contact us!

The projection screen Congress-S is designed for ceiling mounting by mounting brackets on the outer sides of the housing. Up to a size of W 600 x H 400 cm (housing 15 x 15 or 20 x 20 cm) there is a revision possibility without disassembly of the housing. From a size larger than 600 cm width (housing 30 x 30 or 40 x 40 cm) this revision possibility is omitted.

Important note on DIN 56950-4 - All projection screens over 5 meters are equipped with a safety catch and a testable safety limit switch as standard. The built-in switch meets the requirements demanded in stage technology. Thus, all necessary criteria for the tendering and testing of mechanical equipment in operating facilities are already fulfilled in our standard design.

Accessories

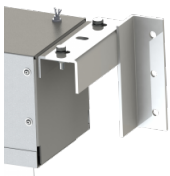


Congress-S pre-assembly frame - for 500 cm screen width



Mounting set - suspended ceiling - for Congress-S

Radio remote control - 1-channel with hand-held transmitter (Congress-S)



Wall bracket without spacing for Congress-S (housing 20 x 20)



Wall spacer 30 cm for Congress-S (housing 20 x 20)



FEATURES

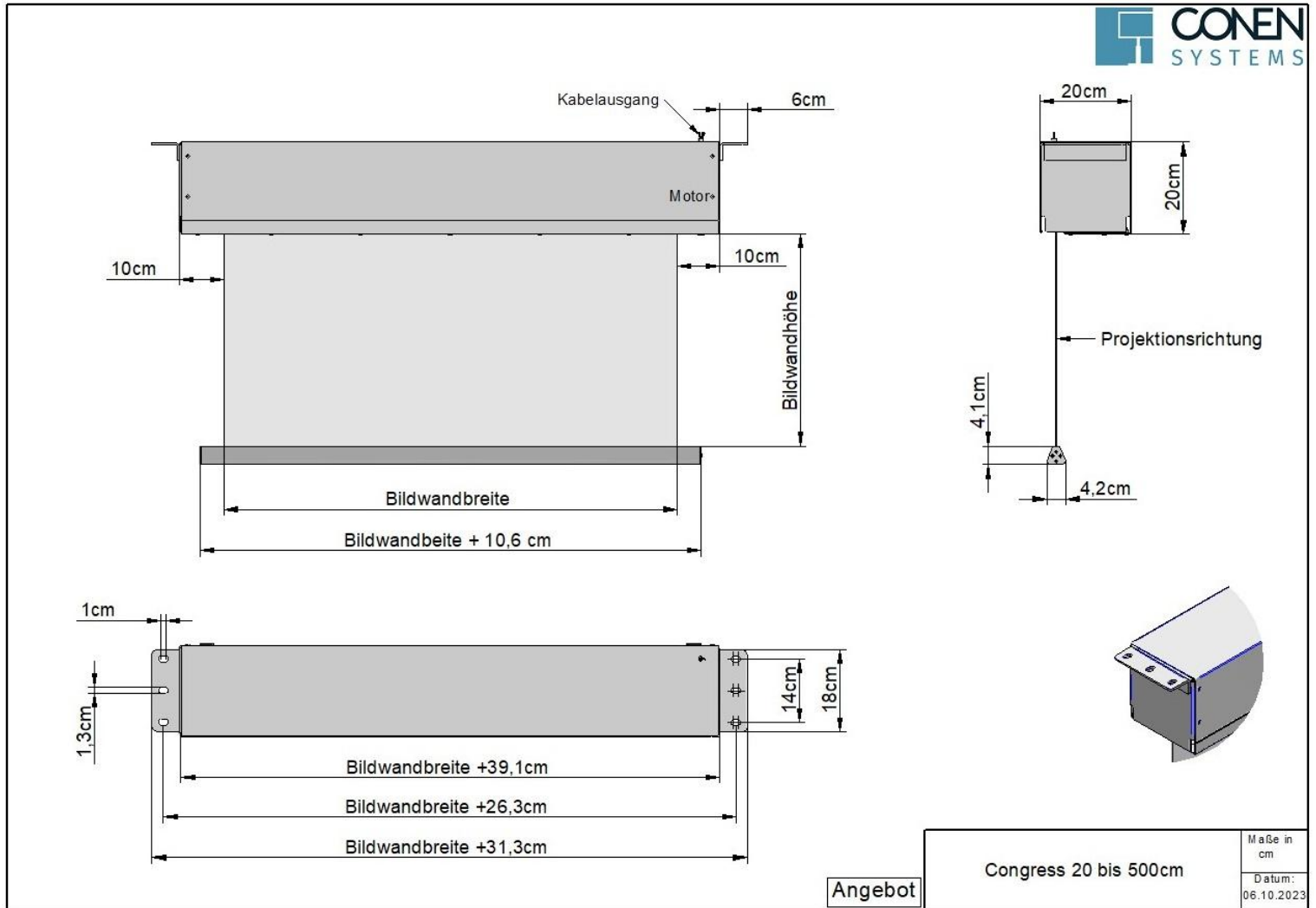
- formats up to 1.000 x 600 cm available
- for ceiling mounting
- wall bracket optionally available
- pre-assembly frame up to 600 x 400 cm optionally available
- Construction DIN 56950-4: 2015 Safety requirements and tests for prefabricated picture walls



Ceiling mounted

Item number	20123150-S	
Image size	5000 mm - 3130 mm	196.9" - 123.2"
Weight	106 kg	233.7 lbs
Packages	Package dimensions WxHxD	Package weight
20123150-S	5500 x 250 x 250 mm / 216.5 x 9.8 x 9.8"	180 kg / 396.8 lbs

Dimensions



Conen Systems GmbH
Conenstr. 4
54497 Morbach-Gonzerath
Germany

T +49 6533 75-100
F +49 6533 75-600
E service@conen-systems.com
www.conen-systems.com

© Copyright by Conen Systems GmbH

07/16/2024
Page 2/2